

D623 Series/D625 Series



Security Systems

EN | User's Guide
Keypads

BOSCH

Figure 1: Information Box

MY ALARM COMPANY IS:

CALL BEFORE TEST: _____

THIS SECURITY SYSTEM IS CONNECTED TO TELEPHONE NUMBER:

THE SECURITY CONTROL PANEL IS CONNECTED TO THE PHONE JACK LOCATED:

TRANSFORMER LOCATION: _____

CIRCUIT BREAKER NUMBER: _____

Contents

About this User Guide	5	View Alarm Memory (Cmd 40)	21
Introduction	5	View System Trouble (Cmd 42)	21
Security System Basics	6	View Point Trouble (Cmd 48)	22
What is a Point?	6	System Test (Cmd 41)	22
What is a Faulted Point?	6	Walk Test (Cmd 44)	23
Are All Points the Same?	6	Reset the System (Cmd 47)	23
Controlled Points	6	Turn Watch On/Off (Cmd 61)	23
24-Hour Points	6	Select Watch Tone (Cmd 62)	24
All On	6	Select Watch Points (Cmd 63)	24
Part On	6	Extend Auto On Time (Cmd 51)	24
Keypad Keys	7	Change Skeds (Cmd 52)	25
Keypad Tones	7	Sked All Days Feature	25
Keypad LED Descriptions	8	All On Skeds	25
Commands	8	Part On Skeds	25
System Events	8	Part 2 On Skeds	26
Fire Alarms	8	Off Skeds	27
Burglary Alarms	8	Output On Skeds	27
Fire Trouble Events	8	Output Off Skeds	27
Non-Fire Trouble Events	8	Change Outputs (Cmd 54)	28
How Your System Reports Alarms	8	Remote Program (Cmd 43)	28
Check System Status	9	All Areas Off (Cmd 81)	28
Log Out of the System	9	All Areas On (Cmd 80)	28
Silence Alarms	9	Move to Area (Cmd 50)	29
Keypad Adjust (Cmd 49)	10	Auto-Forward On Setup (Cmd 83)	29
Turn the System Off	10	Auto-Forward Off Setup (Cmd 84)	30
Turn the System All On (All On or Cmd 1)	10	Auto-Forward On/Off (Cmd 82)	30
Turn the System Part On (Part On or Cmd 2)	11	Remote Arming with Telephone, Area 1	31
Turn the System Part 2 On (Cmd 3)	12	View Log (Cmd 85)	31
Set Part 2 Points (Cmd 65)	12	Basic Pager Reports	32
Turn the System On with No Delay	12	Control Panel Event Descriptions	33
Turn the System On with No Exit Tone (Delay Silent)	13	Security System Limitations	38
Turn the System On with Points Faulted (Force Arm)	14	Fire Safety and Evacuation	38
View Faulted Points	15	Maintenance and Service	40
Bypass Points	15	Power Failure	40
Date and Time (Cmd 45)	16	How to clean the keypad	40
Change Passcode (Cmd 55)	16	Glossary	41
Change Others' Passcodes (Cmd 56)	17	Index	42
Change Others' Passcode Authority Levels (Cmd 56)	17		
Add a Passcode (Cmd 56)	18		
Delete Passcodes (Cmd 58)	19		
Renew One-time Passcodes (Cmd 53)	20		
Check System Troubles (Cmd 4)	20		

Figures

Figure 1: Information Box2
 Figure 2: D623 Series and D625 Series Features5
 Figure 3: Controlled Points are All On6
 Figure 4: Controlled Points are Part On6
 Figure 5: Date and Time format16
 Figure 6: Display layout31
 Figure 7: Pager Display format32
 Figure 8: Smoke Detector locations39

Tables

Table 1: Keypad Keys7
 Table 2: Keypad Tones7
 Table 3: Keypad LED Descriptions8
 Table 4: System Status Messages9
 Table 5: Silencing Exit Tone14
 Table 6: Watch Tone Selection24
 Table 7: Character Code Information32
 Table 8: Control Panel Event Descriptions33

About this User Guide

This User's Guide shows you how to use and maintain your security system. It covers basic functions, such as turning the system on and off.

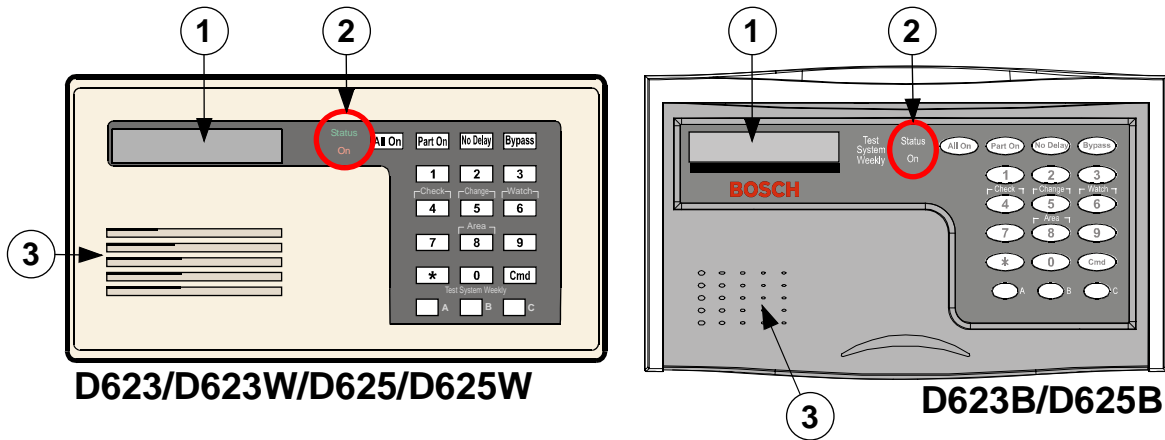
The functions described in this guide are programmed by your security company. Some of them may not be enabled in your system. Certain functions covered may require you to enter your personal passcode.

Introduction

Your system helps to secure life, property, and investments against fire, theft, and bodily harm. It consists of one or more keypads, motion sensors (such as detectors or devices located on doors and windows), and sensing devices designed to detect the presence of smoke or combustion. Each device is connected to a sophisticated control panel with a microprocessor that processes all events registered by the system.

Control of your security system is achieved through the keypad, which offers a variety of basic and advanced features. Its function, versatility, and ease of operation make it ideal for home or office use. The keypad is tailored to meet your individual needs. Moreover, it has been designed with you, the user, in mind.

Figure 2: D623 Series and D625 Series Features



1 - Text display

2- System status indicators

3 - Sounder

Security System Basics

What is a Point?

A **Point** is a detection device or group of devices connected to your security system. Points are identified by the area they monitor, such as a front door, bedroom window, or hallway.

What is a Faulted Point?

When a point (such as a door or window) is closed, it is said to be normal. When the door or window is open, the point is said to be **faulted**, or not normal. When you turn your system on, you usually want all of the points in your system to be normal. However, you can turn your system on with faulted points by using the Bypass Points command.

You can see if there are any faulted points by pressing the [*] key when the system is off.

Are All Points the Same?

Not all points are the same. In fact, there are two basic types of points: Controlled and 24-hour.

Controlled Points

Controlled points respond to alarm conditions depending upon whether the system is turned on or off. They are programmed to either respond instantly to alarm conditions, or to provide a delay for you to reach the keypad and turn the system off. Various controlled points may be located throughout your house.

When you turn your system on, you have the option of turning on all controlled points (**All On**) or just some of the controlled points (**Part On**). See **All On** and **Part On** for more information.

24-Hour Points

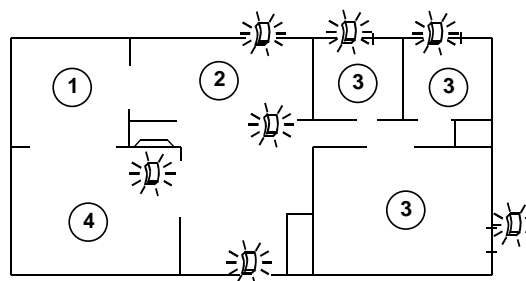
24-hour points are always on, even when the system is turned off. There are two types of 24-hour points: Fire and Non-Fire. See **Reset the System** on page 30 for more information.

- **Fire Points:** Only monitor fire detection devices such as smoke detectors. They are always on and cannot be turned off.
- **Non-Fire Points:** Always on and cannot be turned off.

All On

When you turn your system **All On** you are turning on all controlled points, both interior (motion detectors) and perimeter (doors and windows of the building).

Figure 3: Controlled Points are All On

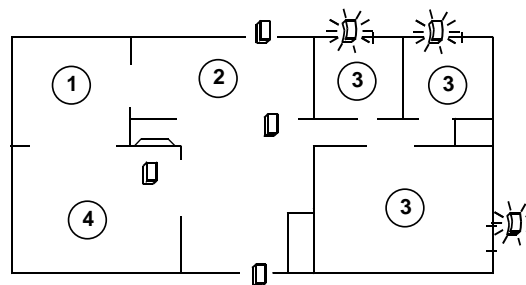


- 1 - Dining room
- 2 - Kitchen
- 3 - Bedroom
- 4 - Living room

Part On

When you turn your system **Part On** you are turning on only a portion of the controlled points. The particular points included in this portion are determined by your alarm company. Part points may include only the perimeter (doors and windows) of your system, or the points on the first floor of a two-story house. Check with your security company to learn which points are Part points.

Figure 4: Controlled Points are Part On



- 1 - Dining room
- 2 - Kitchen
- 3 - Bedroom
- 4 - Living room

Keypad Keys

Your Text keypad has nineteen keys for performing the various functions described below:

Key	Function
[1], [2], [3], [4], [5], [6], [7], [8], [9], [0]	Numeric keys used to enter passcodes and issue commands.
[CMD]	Used in conjunction with numeric keys to enter commands. Also displays system status.
[ALL ON]	Turns your system All On (refer to <i>Turn the System All On (All On or Cmd 1)</i> on page 10).
[PART ON]	Turns your system Part On (refer to <i>Turn the System Part On (Part On or Cmd 2)</i> on page 11).
[NO DELAY]	Turns your system All On or Part On without entry or exit delay (refer to <i>Turn the System On with No Delay</i> on page 12).
[BYPASS]	Bypasses one or more points (refer to <i>Bypass Points</i> on page 15).
[*]	When available, advances to the next display.
[A], [B], [C]	Emergency functions (Fire, Panic, or Emergency Alarms) may be assigned to these keys by your security company. To activate the special function, press the key twice (consecutively) within 2 sec. Your security company labels each key with its assigned function.

Keypad Tones

The keypad emits several distinct tones and illuminates lights to alert you to system events.

Tone	Description
Fire Alarm	When fire point activates, the keypad emits a repeated warble tone (on for 2 sec., then briefly off).
Burglary Alarm	When a burglary point activates while your system is turned on, the keypad emits a continuous warble tone. The sounder remains on for the duration of the time set by your security company.
Trouble	When a system component is not functioning properly, your keypad emits a repeated warble tone (on briefly, followed by a pause, followed by the warble tone). Press [4] to view the trouble. If problem is point-related, the keypad display indicates the faulted point.
Key Press	Pressing any key on the keypad sounds a short pip to indicate the pressed key is accepted.
Entry Delay	When you enter the premises through a point programmed for Entry Delay, the keypad emits an intermittent beep to remind you to turn your system off. If the system is not turned off before the Entry Delay expires, an alarm condition occurs and a report may be sent to your alarm company.
Exit Delay	After you turn your system on, the keypad emits an intermittent beep and counts down the Exit Delay time. If you do not exit before the Exit Delay time expires and an Exit Delay point is faulted, an alarm event begins.
Error	If you press an incorrect key, your keypad emits an error tone to indicate an invalid entry. The Error Tone is the same warble tone as the Trouble Tone, but is not repeated.
OK	Indicates a keypad entry is accepted, such as a correctly entered passcode. The Keypad emits a single, high-pitched beep for 1 sec.
Watch	If any watched point is faulted, the keypad emits a tone to alert. The tone varies in duration, depending on the selected Watched Tone (refer to <i>Select Watch Tone (Cmd 62)</i> on page 24).

Keypad LED Descriptions

The keypad LEDs are described below.

LED	State	Description
Status	On	No system troubles present.
	Slow Flash	AC failure, system trouble, or keypad was moved away from its assigned area.
	Fast Flash	Command center in Command Mode.
On	Off	Panel is disarmed.
	Slow Flash	Panel is armed with No Delay.
	On	Exit Delay timer is active or control panel is armed with Entry/Exit Delay.

Commands

Commands allow you to carry out various tasks such as add/delete passcodes, set the date/time, or test the system. Each command is detailed in this user guide.

Commands are written as: [CMD] [6] [3]. To enter this command, first press the [CMD] key, followed by the [6] key, and then the [3] key.

System Events

Your system responds to four types of alarm events. If more than one event occurs, your system sorts them into one of four groups: Fire Alarms (highest priority), Burglary Alarms, Fire Troubles, and Non-Fire Troubles (lowest priority). Events grouped as highest priority are always sent to the central station first.

Fire Alarms

Fire alarms are the highest priority events. When a fire point activates, your keypad emits a Fire Alarm tone. The tone sounds for the length of time programmed by your installation company. Evacuate all occupants and investigate for smoke or fire. Ensure all occupants know the difference between the Burglary Alarm tone and the Fire Alarm tone.

Burglary Alarms

Burglary alarms are the second priority. When a burglary point activates, your keypad emits a Burglary Alarm tone. The tone sounds for the alarm set by your security company. Ensure all occupants know the difference between the Burglary Alarm tone and the Fire Alarm tone.

The keypad scrolls through each point alarm, or you can press the [*] key to manually advance the list.

Fire Trouble Events

When a fire trouble (such as a loose wire) occurs, your keypad emits a Trouble tone.

The keypad displays the System Trouble message. Refer to *Check System Troubles (Cmd 4)* on page 20 for more information on determining the nature of the trouble.

Non-Fire Trouble Events

When a trouble event such as a power failure occurs, your keypad emits a trouble tone.

The keypad displays the System Trouble message. Refer to *Check System Troubles (Cmd 4)* on page 20 for more information on determining the nature of the trouble.

How Your System Reports Alarms

Your security system may be programmed to automatically disconnect your telephone when sending reports to your security company. Once the report is complete, the system returns the telephone to normal operation (check with your security company).

Your system makes repeated attempts to send reports to your security company. If your system fails to report, the keypad signals a system trouble. Refer to *Check System Troubles (Cmd 4)* on page 20 to determine the nature of the trouble.



If your telephone service is interrupted, your security system cannot send reports to your security company unless it has an alternate means of transmitting them.

Check System Status

When the system is Off, press [CMD] to show the current system status. The following message may appear:

System Status Message	Description
System OK	Indicates there are no system troubles.
System Trouble! Press [4] to view	Indicates there is a system trouble. Refer to <i>Check System Troubles (Cmd 4)</i> on page 20 to determine the nature of the trouble.
Points faulted Press [0] to view	Indicates the system has faulted points. Refer to <i>View Faulted Points</i> on page 15 for more information.

- Press and hold [CMD] to remove the alarm messages from the keypad display. Refer to *Section View Alarm Memory (Cmd 40)* on page 21 to see which points caused the alarm.

Log Out of the System

The system remembers passcodes entered for approximately 10 sec. after you stop pressing keys. To log out of the system, press the [CMD] key twice. Logged Out appears on the keypad display.

Silence Alarms

When an alarm occurs, the alarm tone sounds and the display shows the point(s) in alarm. If you enter your passcode before the system dials your security company, the alarm report is aborted.

- The keypad displays the point(s) in alarm.

```
Alarm Pt4
Living Room
```

```
Enter code to
silence alarm
```

- Enter your passcode to silence the alarm and turn the system off (if it was turned on). An alarm report is sent to your security company if the alarm is not acknowledged in time.

The display continues to show the point (or points) that caused the alarm.

```
Silenced alarms
listed below
```

```
Alarm Pt8
Motion Detector
```

```
To remove
silenced alarms
```

```
from display,
hold Cmd
```

Keypad Adjust (Cmd 49)

- I can perform this command.
- I cannot perform this command.

Use Command 49 to adjust the keypad sounder volume and the display brightness.

1. Press [CMD] [4] [9]. Enter a valid passcode if prompted.
2. To adjust the keypad sounder volume, press and hold the [*] key and then press [1] to increase the volume or [4] to decrease the volume.
3. To adjust the keypad display brightness, press and hold the [*] key and then press [3] to increase the brightness or [6] to decrease the brightness.
4. Press [CMD] to exit this command function when all adjustments are made.

Turn the System Off

Entry Delay Time (to be filled in by your security company).

You have _____ sec. to enter premises and turn system off.

Enter your passcode to turn the security system off.

When the system is on, you must enter through a designated entry door to prevent an alarm. Opening a designated door, such as the Front Door, starts the entry delay. During entry delay time, the keypad emits a double tone to remind you to turn the system off. Enter your passcode before the entry delay time expires to turn the system off.

If you enter through the wrong door or fail to turn the system off before the entry delay time expires, you may cause an alarm. If an alarm occurs, silence the alarm by entering your passcode and call your security company to let them know that there is no emergency situation.

1. When the system is on, the On indicator illuminates. If the system is All On, the keypad display shows:

```
Smiths Residence
All On
```

If the system is Part On, the keypad display shows (Part 2 On shows if the system is Part 2 On):

```
Smiths Residence
Part On
```

2. Enter your passcode to turn the system off. Once the system is off and there are no faulted points, the keypad displays the idle text (second line) as shown below:

```
Smiths Residence
OK for All On
```

Turn the System All On (All On or Cmd 1)

Exit Delay Time (to be filled in by your security company).

You have _____ sec. to exit premises before system turns on.

Use this command to turn on the entire system. Once you press the [ALL ON] key or enter Cmd 1, the Exit Delay timer starts its countdown. The length of exit delay is programmed by your security company.

When your system is ready to turn All On, it displays OK for All On, indicating all points are normal, such as no open doors or windows and no one standing in front of a motion detector.

```
Smiths Residence
Ok for All On
```

If your keypad displays a message indicating the system is not ready to arm (such as Not Ready to Arm), check all doors and windows to see if any are open or if someone or something is in front of a motion detector. If all protected doors and windows are closed and no motion detectors are blocked and the keypad still displays Not Ready to Arm, contact your security company for assistance.

In the example below, the exit delay is 60 sec. Leave before the exit time expires. Leaving after exit delay expires causes an alarm event.

1. Make sure all points are normal (not faulted). If your system has a faulted point (door/window open), you can either close it or bypass it (see Bypass Points 1 on page 18).
2. Press [ALL ON] or [CMD] [1]. The keypad may prompt you to enter a valid passcode.

3. Enter your passcode if necessary. Exit delay time begins. The On indicator turns on. **Exit the building now.**

60 seconds to
All On.

Enter your passcode to stop the system from turning on during the exit delay.

Press [BYPASS] to bypass points (see Bypass Points on page 18). You can turn the system All On with No Delay by pressing [NO DELAY]. You can also turn the system Part On by pressing [PART ON]. The system prompts you through this procedure.

To bypass points
Press Bypass

For no delay
press No Delay

For Part On
press Part On

4. During the last 10 sec. of Exit Delay, the keypad displays Do not exit! and emits a double tone every second to warn you not to exit and to turn the system off. The system turns All On. The On indicator remains on steady.

Smiths Residence
All On

5. To turn the system off, enter your passcode.

Turn the System Part On (Part On or Cmd 2)

Exit Delay Time (to be filled in by your security company).

You have _____ sec. to exit premises before system turns on.

- I can perform this command.
- I cannot perform this command.

Part On turns on only part of your system, leaving the rest of the system turned off.

If your keypad shows OK for Part On or OK for All On, this means all of the points that turn on for Part On operation are normal (such as all protected doors and windows being closed).

Smiths Residence
Ok for Part On

Once you press the [PART ON] key, exit delay begins. Use Part On when you want part of your system turned on. For example, use Part On if you plan to stay inside the premises and you only want to protect the perimeter doors, or you are leaving and you want a pet to move freely about inside without causing an alarm.

1. Make sure that Part points are normal (not faulted). If your system has faulted points, return them to normal, or bypass them.
2. Press [PART ON]. The keypad may prompt you to enter a valid passcode.
3. Enter your passcode if necessary. The On indicator turns on and Exit delay time begins. The keypad display scrolls the following:

60 seconds to
Part On.

To bypass points
Press Bypass.

For no delay
Press No Delay.

For All On
press All On

48 seconds to
Part On.

Enter your passcode to stop the system from turning on during the exit delay. You can turn the system Part On with No Delay by pressing [NO DELAY]. Or you can bypass points by pressing [BYPASS].

- During the last 10 sec. of Exit Delay, the keypad displays **Do not exit!** and emits a double tone every second to warn you not to exit and to turn the system off. The system turns Part On. The On indicator remains on steady.

Smiths Residence
Part On

- To turn the system off, enter your passcode.

Turn the System Part 2 On (Cmd 3)

Exit Delay Time (to be filled in by your security company).

You have _____ sec. to exit premises before system turns on.

- I can perform this command.
- I cannot perform this command.

Part 2 On turns on the portion of your system designated as Part 2, leaving the rest of the system turned off. You can select the points that turn on for Part 2 On, whereas Part On points are determined by your security company (refer to *Set Part 2 Points (Cmd 65)* on page 12). Once you press [CMD] [3], the exit delay timer countdown begins.

Smiths Residence
Ok for Part On

In the following example, 60 sec. is used as the Exit Delay. Exit Delay is set by your security company and may vary from the example shown below.

- Make sure that points are normal (not faulted).
- Press [CMD] [3] to turn the system Part 2 On. The keypad may prompt you to enter a valid passcode.
- Enter your passcode if necessary. The On indicator turns on. The keypad display scrolls the following:

60 seconds to
Part 2 On.

To bypass points
Press Bypass.

For no delay
Press No Delay.

For All On
press All On

48 seconds to
Part 2 On.

Enter your passcode to stop the system from turning on during the exit delay. You can turn the system Part 2 On with No Delay by pressing [NO DELAY], or you may bypass points by pressing the [BYPASS] key.

- During the last 10 sec. of Exit Delay, the keypad displays **Do not exit!** and emits a double tone every second to warn you not to exit and to turn the system off. The system turns Part 2 On. The On indicator remains on steady.

Smiths Residence
Part 2 On

- Enter your passcode to turn the system off.

Set Part 2 Points (Cmd 65)

- I can perform this command.
- I cannot perform this command.

Use this command to program which points are armed each time you turn the system Part 2 On. This lets you turn part of the system on to detect intrusion, while the remaining part of the system lets you move freely without sounding an alarm.

- Make sure the system is turned off (On indicator is off).
- Press [CMD] [6] [5]. The keypad may prompt you to enter a valid passcode.
- Enter your passcode if necessary. The keypad display scrolls the following:

Pt2 Part 2 No
Front Door

Press 2* for
Pt2 Part 2 Yes

Pt3 Part 2 Yes
Hallway

Press 3* for
Pt3 Part 2 No

To exit
Press Cmd.

- Enter the Point Number followed by the [*] key to toggle between Yes or No for Part 2 On. Repeat until all points are programmed Yes or No for Part 2 Mode (Yes = Active, ready to detect intrusion; No = Non-Active, you can move freely without sounding an alarm).
- Press [CMD] to exit this command.

Turn the System On with No Delay

This command turns the system All On or Part On without entry or exit delays. Remember that turning the system on with no delay allows no exit or entry delay time through the designated delay point, like the Front Door.

- Make sure all points are normal (not faulted).

- Press [ALL ON] if you want to turn the system All On, or press [PART ON] if you want to turn the system Part On. Press [CMD] [3] if you want to turn the system Part 2 On. The keypad may prompt you to enter a valid passcode.
- Enter your passcode if necessary. The keypad display shows the following for turning the system All On:

```
60 seconds to
All On.

To bypass points
Press Bypass.

For no delay
Press No Delay.
```

Pressing [NO DELAY] begins a 10-sec. "last chance" window in which you have 10 sec. to decide if you want to allow the system to arm. During this window, the display scrolls through the following messages: No exit time! System arming. Do not exit! If you decide not to allow the system to arm, enter your user passcode. If all points are normal, the display shows the following for Part On (the display shows Part 2 On if the system is Part 2 On):

```
60 seconds to
Part On.

To bypass points
press Bypass.

For no delay
Press No Delay.
```

- To turn the system on (All On, Part On, or Part 2 On) with no delay, press [NO DELAY].

The keypad scrolls the following for All On:

```
No exit time!
System arming.
Do not exit!

Enter code to
turn system off
Smiths Residence
All On
On with No Delay
```

The keypad scrolls the following for Part On (the display shows Part 2 On if the system is Part 2 On):

```
No exit time!
System arming.
Do not exit!

Enter code to
turn system off
Smiths Residence
Part On
On with No Delay
```

- When the system is All On with No Delay, the keypad displays the following:

```
Smiths Residence
All On
On with No Delay
```

If the system is Part On or Part 2 On with No Delay, the keypad displays the following (the display shows Part 2 On if the system is Part 2 On):

```
Smiths Residence
Part On
On with No Delay
```

The On indicator turns on and blinks, indicating the system is on with no delay.

- To turn the system off, enter your passcode.

Turn the System On with No Exit Tone (Delay Silent)


Use this command to turn the entire system All On, Part On, or Part 2 On without any exit tones. Remember that turning the system on with no exit tone eliminates the tone emitted by the keypad intended to alert occupants that the system is about to arm.

This command is useful when you wish to arm the system, but not disturb the occupants while the system counts down prior to arming.

- Make sure all points are normal (not faulted).
- Press and hold the appropriate key to silence the exit tone. The keypad may prompt you to enter a valid passcode.

Table 5: Silencing Exit Tone

Arming With	To Silence Exit Tone
All On	Press and hold [ALL ON] OR Press [CMD], then press and hold [1].
Part On	Press and hold [PART ON] OR Press [CMD], then press and hold [2].
Part 2 On	Press [CMD], then press and hold [3].

 Silencing the Exit Delay Tone doubles the Exit Delay period.

3. Enter your passcode if necessary. The keypad display shows the following for turning the system All On:

```
120 seconds to
All On.
To bypass points
press Bypass.
For no delay
Press No Delay.
```

If all points are normal, the display shows the following for Part On or Part 2 On. If the system is turned Part 2 On, the second line of the display shows Part 2 On:

```
120 seconds to
Part On.
To bypass points
press Bypass.
For no delay
Press No Delay.
```

4. To turn the system on (All On, Part On, or Part 2 On) with no delay, press [NO DELAY]. See Turn the System On with No Delay on page 14 for more information.

Turn the System On with Points Faulted (Force Arm)



Force-arming is not permitted for UL applications.

- I can perform this command.
- I cannot perform this command.

1. Press [ALL ON] or [PART ON] to turn the system All On or Part On.
2. The keypad displays the faulted points as follows:

```
Pt5 faulted,
Point Text
To Bypass Pt5
Press 5 + *
```

Then the system identifies the faulted point (in this example Point 5), followed by instructions for bypassing the point.

3. To force arm the system All On or Part On with normal Exit Delay and exit tone, press [ALL ON] or [PART ON] again. Enter your passcode when prompted. The following scrolls across the display:

```
Forced on!
60 seconds to
All On.
1 points are
forced on.
```



The display above uses an Exit Delay time of 60 sec. and only one point is force-armed. Exit Delay time and the number of points forced on may vary.

4. To force arm the system All On or Part On with Exit Delay doubled and no exit tone, press and hold [ALL ON] or [PART ON] until the “point faulted” message appears (see figure in Step 2). Then press [ALL ON] or [PART ON] again. Enter your passcode if prompted. The system then scrolls the Forced on! message and the doubled Exit Delay Time countdown. The exit tone is silenced. The system ‘forces’ the faulted points on. As long as they remain faulted they do not provide protection. If the faulted points return to normal before the system is turned off, they provide protection and are capable of starting alarm events. If a point becomes faulted after the exit delay begins, the keypad displays the faulted point. If the point remains faulted at the end of exit delay, it starts an alarm event.

View Faulted Points

To correctly turn your system on, all doors and windows must be in the normal (not faulted) condition. Use this command to locate faulted points.

1. Ensure the system is turned off (On indicator off).
2. Press [*]. If points are faulted the keypad displays the following:

System OK or Point faulted,
Press 0 to view

3. If there are faulted points, press [0] to view. The keypad scrolls through all faulted points:

Pt2 faulted,
Front Door

To bypass Pt2
Press 2 + *

Pt7 faulted,
Back Door

To bypass Pt7
Press 7 + *

4. Return the faulted points to the normal condition (like close the front door), or you may choose to bypass the points by following the displayed instructions (such as Press [2] [*]).
5. Once the points return to normal or are bypassed, the system is ready to turn on.

Bypass Points

- I can perform this command.
- I cannot perform this command.

Use this command to bypass one or more points before turning the system All On, Part On, or Part 2 On. You can access a bypassed point when the system is armed without activating an alarm.

Example: Your kitchen was just painted and you want to leave the windows open but still turn the system on. Bypassing points allows the system to be on, but prevents it from monitoring undesired areas.

1. Ensure that the system is turned off (On indicator is off).
2. Press the [BYPASS] key. The keypad may prompt you to enter a valid passcode.
3. Enter your passcode if necessary. The keypad scrolls all zones that can be bypassed:

Pt1,
Front Door

To bypass Pt1
Press 1 + *.

Pt2,
Back Door

To bypass Pt2
Press 2 + *.

4. Enter the Point Number that you want to bypass followed by [*] (for example, if you want to bypass Point 10, enter [1] [0] [*]). Repeat this step to bypass all desired points.

If a point is already bypassed, the keypad displays:

Pt3
Hallway

To unbyypass 3
Press 3 + *

If a point is faulted, the keypad displays the point number. If the point is bypassable, the keypad prompts you to press the point number followed by the [*] key. If the point is unbyypassable, the display tells you the point cannot be bypassed.

5. Press [CMD] to exit this command function.
Press [CMD] to exit this command function.

Date and Time (Cmd 45)

- I can perform this command.
- I cannot perform this command.

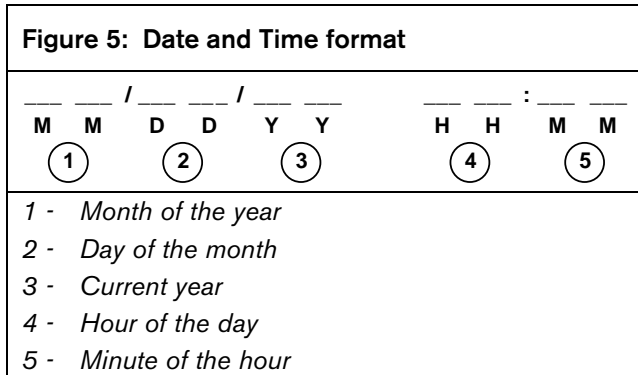
Use this command to program the system date and time.

1. Ensure that the system is turned off (On indicator is off).
2. Press [CMD] [4] [5]. The keypad may prompt you to enter a valid passcode.
3. Enter your passcode if necessary. The keypad displays.

Please Enter
Date and Time

MM/DD/YY HH:MM
01/01/01 00:01

4. Enter the date and time using the numeric keys in MM/DD/YY, HH:MM format.



5. The keypad displays both the date and time you entered before returning the keypad to the normal display. In this example, the keypad displays.

Current Date
04/16/01

Current Time
13:35

The keypad returns to the normal display.



In the event of a power cycle (power is lost to the system and then restored), the control panel takes the last event in the log and uses that as a starting point for the time and date. It then alerts you to enter the current time and date.

Change Passcode (Cmd 55)

- I can perform this command.
- I cannot perform this command.

Use this command to change your passcode at any time. **However, only use this feature under the direction of your security company.** The system must be off in order to use this command.

Write down your new and old passcode before you begin.

1. Ensure that the system is turned off (On indicator is off).
2. Press [CMD] [5] [5]. The OK tone sounds and the keypad displays:

Please enter
old code

3. Enter your current passcode. As you enter your passcode, the keypad displays:

Entering Code

4. If the passcode you have entered is valid, you are prompted to enter your new passcode:

Please enter
new code

5. Enter a new passcode with the same number of digits as your old passcode. If the error tone sounds, try a different new passcode. As you enter your new passcode, the keypad displays:

Entering Code

6. If you have entered a valid new passcode, the keypad prompts you to enter the new passcode again:

Please enter
new code again

7. Enter your new passcode again. As you enter your new passcode, the keypad displays:

Entering Code

8. The keypad displays the following to confirm you have successfully changed your passcode:

Code changed

The keypad returns to the normal display.

Change Others' Passcodes (Cmd 56)

- I can perform this command.
- I cannot perform this command.

Use this command to change passcodes for each user in the system. This command requires the appropriate authority level to change passcodes. **Only use this feature under the direction of your security company.**



Cmd 56 is only for changing passcodes other than the one used to access Cmd 56. For example, if User 1 performs Cmd 56, he/she cannot modify his/her own passcode. Use Cmd 55 instead.

1. Ensure that the system is turned off (On indicator is off).
2. Press [CMD] [5] [6]. The keypad may prompt you to enter a valid passcode.
3. Enter your passcode if necessary. The keypad scrolls through the available options. If an option is not selected after the list cycles once, the keypad automatically exits this command.
4. Press [1] to change passcodes. The keypad scrolls through all passcodes that are available for changing.

To change code 2
press 2*.

To change code 3
press 3*.

Push Cmd to exit

5. Enter the passcode number (1 to 32) you want to change followed by [*]. For example, press [2] [*] to change Passcode 2. The keypad prompts you to enter the new passcode.

Please enter new
code 2.



If the user does not exist in the system, the keypad emits an error tone.

6. Enter the new passcode with the same number of digits as the old passcode. If the error tone sounds, try a different new passcode.
7. If you have entered a valid new passcode, the keypad prompts you to enter the new passcode again.

Please enter new
code 2 again.

8. Enter the new passcode again.
9. The keypad displays the following to confirm the passcode change.

Code 2 changed.

10. Repeat Steps 4 through 9 to change another passcode or press [CMD] to exit this feature. Pressing [CMD] again returns to the normal display.

Change Others' Passcode Authority Levels (Cmd 56)

- I can perform this command.
- I cannot perform this command.

Use this command to change passcode authority levels for each user in the system. This command requires the appropriate authority level to change passcodes. You cannot change your own passcode authority level. Only use this feature under the direction of your security company. The following is filled in by your security company.

- Authority Level 1 includes these commands:

- Authority Level 2 includes these commands:

- Authority Level 3 includes these commands:

- Authority Level 4 includes these commands:

1. Ensure that the system is turned off (On indicator is off).
2. Press [CMD] [5] [6]. The keypad may prompt you to enter a valid passcode.
3. Enter your passcode if necessary. The keypad scrolls the following:

Push 1 to change
codes.

Push 2 to change
authority level.

4. Press [2] to change passcode authority levels. The keypad display scrolls:

```
To change level
for code 3,
```

```
Press 3*.
```

```
To change level
for code 4,
```

```
Press 4*.
```

```
Push Cmd to exit
```

5. Enter the passcode number (1 to 32) that you want to change the authority level for, followed by [*] (for example, press [3] [*] to change the authority level for Passcode 3). The keypad display scrolls the following:

```
Code 3 level 2
Enter new level.
```

```
Level choices
are 1 to 4.
```

```
Push Cmd to exit
```



If the user does not exist in the system, the keypad emits an error tone.

6. Enter the new authority level (1 to 4) for the passcode that you want to change. The authority levels are determined by the installing company.
7. Press [CMD] to exit this feature. Press [CMD] again to return to the normal display.

Add a Passcode (Cmd 56)

- I can perform this command.
- I cannot perform this command.

Use this command to add new passcodes to the system. This command requires the appropriate authority level to add passcodes. To add a new passcode to the system, you must assign an area(s) to the new user in addition to using the other Cmd 56 features (changing a passcode and changing a passcode authority level) as outlined below. Only use this feature under the direction of your security company.

1. Ensure that the system is turned off (On indicator is off).
2. Press [CMD] [5] [6]. The keypad may prompt you to enter a valid passcode.
3. Enter your passcode. The keypad scrolls through the following selections:

```
Push 1 to change
codes.
```

```
Push 2 to change
authority level.
```

```
Push 3 to change
areas assigned.
```

4. Press [3] to assign an area(s) to the new user.
5. Enter the user number you wish to assign area(s) to followed by the [*] key. For example, for User 4, press [4] [*]. The keypad toggles between the following displays:

```
Code 4 Areas:
----
```

```
Press 1 to 4 to
toggle areas.
```

6. Enter the area(s) you want to assign to the new user by pressing the appropriate numeric key(s). For example, if the user is to be assigned to Areas 1 and 2, press the [1] and [2] keys. The keypad displays:

```
Code 4 Areas:
12--
```

To remove a currently assigned area(s), press the corresponding numeric key(s). For example, if User 4 is assigned to Areas 1 and 2, but should only be assigned to Area 1, press [2] to remove Area 2 from User 4's area assignment.

7. Press [CMD] twice to return to the three Cmd 56 selections. Then, press [1] to create a passcode for the new user.
8. Enter the user number followed by [*]. For example, press [4] [*] to create the passcode for User 4.

9. When the display prompts, Please enter new code, enter a new passcode. If the error tone sounds, try a different new passcode. Enter the new passcode again for verification.
10. Press [CMD] twice to return to the three Cmd 56 selections. Then press [2] to assign a passcode authority level to the new user.
11. Enter the user number and press [*]. For example, press [4] [*] to assign an authority level for User 4.
12. Enter an authority level (1 to 4) by pressing the appropriate numeric key. keypad displays:

```
Code 4 level 0.
Enter new level.
```

The number following the word “level” on the first line indicates the authority level the user passcode is currently assigned to.

13. Use *Steps 1* through *12* to add more new users or press [CMD] until the keypad emits a single beep tone and the display returns to the normal display.



The new user passcode, area assignment and authority level automatically logs into the system's programming memory. Make sure that your security company's programming records are properly updated.

Delete Passcodes (Cmd 58)

- I can perform this command.
- I cannot perform this command.

Use this command to delete passcodes. This command requires the appropriate authority level to delete passcodes. You cannot delete your own passcode using this command. Only use this feature under the direction of your security company.

1. Make sure the system is turned off (On indicator is off).
2. Press [CMD] [5] [8]. The keypad may prompt you to enter a valid passcode.
3. Enter your passcode if necessary. The keypad prompts you to delete a code.

```
Delete code 1?
Press 1*.
```

```
Delete code 2?
Press 2*.
```

```
Push Cmd to exit
```

4. Enter the passcode number (1 to 32) you want to delete. For example, press [2] [*] to delete Passcode 2.

```
Code 2
deleted.
```

```
Press * to
continue.
```



If the user does not exist in the system, the keypad emits an error tone.

5. Press [CMD] to exit this command. If no keys are pressed, the keypad automatically returns to the normal display.

Renew One-time Passcodes (Cmd 53)

- ❑ I can perform this command.
- ❑ I cannot perform this command.

One-time passcodes can only be used once to turn the system off. This command allows those with the applicable authority level to renew previous One-Time passcodes. Once renewed, the One-Time passcode is again able to turn the system off only once.

1. Make sure the system is turned off (On indicator is off).
2. Press [CMD] [5] [6]. The keypad may prompt you to enter your passcode.
3. Enter your passcode if necessary. The keypad scrolls through the available one-time passcodes.

```
To renew all
One-time codes
```

```
Press 0*.
```

```
To renew code 5
Press 5*.
```

4. Press [0] [*] if you want to renew all one-time passcodes or press the passcode number followed by [*]. For example, if you want to renew Passcode 5, press [5] [*].
5. If you press [0] to renew all one-time passcodes, the keypad displays:

```
All one-time
codes renewed.
```

6. If you select a single passcode to renew, like Passcode 5, the keypad displays:

```
One-Time Code 5
renewed.
```

7. The system returns to the normal display.

Check System Troubles (Cmd 4)

Your system emits a trouble tone and displays the System Trouble message to alert you to a system trouble event, like low batteries. Use this command to learn what is causing the trouble and the steps to take to correct it.

1. The system may be on or off when a system trouble occurs. If the system is on, you must turn it off to check the trouble. The keypad displays:

```
Trouble! Press
Cmd 4 to view.
```

2. Press [CMD] [4]. The trouble tone silences and the keypad scrolls through the list of troubles. Follow the keypad display instructions to view the trouble events.

```
Point Trouble!
Press 8 to view.
```

```
Alarm Memory!
Press 0 to view.
```

```
Date/time lost!
Press 5 to set.
```

```
System Trouble!
Press 2 to view.
```

```
To Test System,
press 1.
```

```
To Walk Test,
press 4.
```

```
To reset,
Press 7.
```

```
System OK!
Press Cmd.
```

3. Press [CMD] to return the keypad to the normal display.

The trouble tone continues until the situation is acknowledged.



The trouble tone for AC Failure events sounds at all keypads in all areas. However, the trouble tone must be silenced in each area (silencing it in one area does not silence it in the other areas).

View Alarm Memory (Cmd 40)

After an alarm is silenced and cleared from the display, you can still review the points in alarm.

1. Ensure the system is turned off (On indicator is off).
2. Press [CMD] [4] [0]. The keypad may prompt you to enter a valid passcode.
3. Enter your passcode if necessary. The keypad shows all points in alarm memory. In this example, the keypad displays that Point 5 alarmed.

```
Alarm Pt5
Bedroom 1 Window
```

If you enter your passcode before the system reports to your alarm company, the keypad displays:

```
Abort Pt8
Bedroom 1 Window
```

When the last alarm is shown, the keypad displays:

```
To clear memory,
Turn system On.
```

If no alarm memory is present, the keypad displays:

```
No alarms in
system memory.
```

4. The keypad returns to the normal display. Turn the system on again to clear alarm memory.

View System Trouble (Cmd 42)

Use this command to view system troubles. For example, a system trouble occurs when the system is running only on the backup battery, there is communications trouble, or it is time for the system to be serviced by your security company.

1. Ensure the system is turned off (On indicator is off).
2. Press [CMD] [4] [0]. The keypad may prompt you to enter a valid passcode.
3. Enter your passcode if necessary. The keypad shows all points in alarm memory. In this example, the keypad displays that Point 5 alarmed.

If the system has no AC main supply and is operating off the backup battery, the keypad displays:

```
System running
on battery only.
```

If the system detects the telephone line is missing or there is no dial tone, the following appears on the keypad.

```
Line 1 trouble.
Check Dial tone.
```

If the system fails to communicate with the security company, the keypad displays:

```
Comm Fail
Destination 1
```

If the system was programmed to be serviced by your security company at the service interval, the keypad displays the following:

```
Call for service
```

If there are no system troubles, the keypad displays:

```
There are no
system troubles!
```

4. Press [CMD] to return to the normal display.

View Point Trouble (Cmd 48)

Use this command to view any points (if any) that are in trouble.

1. Ensure the system is turned off (On indicator is off).
2. Press [CMD] [4] [8]. The keypad may prompt you to enter a valid passcode.
3. Enter your passcode if necessary. The keypad scrolls through all points in trouble.

Be sure to investigate the source of the trouble condition. Correct the condition if possible. For example, remove objects blocking a sensor point or respond appropriately to the trouble indicated.

If there are no points in trouble, the keypad displays:

```
There are no
point troubles.
```

4. Press [CMD] to return to the normal display.

System Test (Cmd 41)

- I can perform this command.
- I cannot perform this command.

The System Test ensures your system is operating correctly by testing the system's bell, strobe, battery, and phone line. Only those programmed by your installing security company will be tested. For example, the system may only be programmed to test the back-up battery and the bell output.

I can test:

- System Bell
- Battery
- System Strobe
- Phone Line

If any of these components fail to test, contact your security company for assistance. Be sure to contact your security company before you begin the system test.

1. Ensure the system is turned off (On indicator is off).
2. Press [CMD] [4] [1]. The keypad may prompt you to enter a valid passcode.
3. Enter your passcode if necessary. The system starts the test. The bell output is tested first and should sound for approximately 2 sec to 3 sec. The display shows:

```
Testing Bell.
```

4. Listen for bell activation.
The strobe output is tested next. This test resets after approximately 20 min or when [*] is pressed.

```
Testing Strobe.
Press * to End
```

5. Check for strobe activation.
The next component to be tested is the back-up battery. This test may take up to 4 min.

```
Testing Battery
May take 4 min.
```

The keypad displays the result of the battery test:

```
Battery Test
passed.
```

or

```
Battery Test
failed!
```

```
Please call for
service.
```

Finally, the phone connection is tested. This test may take up to 10 min.

```
Testing Phone.
May take 10 min.
```

The keypad displays the result of the phone line test:

```
Phone Test
passed.
```

or

```
Phone Test
failed.
```

```
Please check for
dial tone.
```

6. When the test is complete, the system returns to the normal display.
7. To stop the test currently in progress and skip to the next test, press [*]. To abort all system tests and return to the normal display, press [CMD].

Walk Test (Cmd 44)

- I can perform this command.
- I cannot perform this command.

Use this command to walk-test detection devices connected to your system. Perform the Walk Test on a weekly basis. The types of devices that can be walk-tested are configured by your security company.

1. Ensure the system is turned off (On indicator is off).
2. Press [CMD] [4] [4]. The keypad may prompt you to enter a valid passcode.
3. Enter your passcode if necessary. The system starts the walk test.

The keypad display scrolls all points one at a time that need to be tested. To successfully test each point, you must trigger the corresponding detection device, such as reed switch or PIR).

```
Pt2 Un-Tested
Front Door.
```

```
Pt3 Un-Tested
Hallway.
```

```
Pt4 Un-Tested
Living Room.
```

```
To stop test
Press Cmd.
```

As each point is tested, the keypad display scrolls:

```
Pt2 Tested OK
Front Door
```

```
Pt3 Tested OK
Hallway
```

4. To stop testing, press [CMD].



Test fire detection devices (smoke/heat detectors) weekly as instructed by your security company and in accordance with the devices' instructions.

Reset the System (Cmd 47)

- I can perform this command.
- I cannot perform this command.

Use this command to reset the system (including fire points) after an alarm. Detection devices, such as smoke detectors and shock sensors, must be reset after being activated. Resetting the system takes about 20 sec.

If points do not reset, contact your installing company for help.

1. Ensure the system is turned off (On indicator is off).
2. Press [CMD] [4] [7]. The keypad may prompt you to enter a valid passcode.
3. Enter your passcode if necessary. The system resets and the keypad displays:

```
Resetting...
```

After the system has reset, the keypad display automatically returns to the normal display.

Turn Watch On/Off (Cmd 61)

- I can perform this command.
- I cannot perform this command.

Use the Watch feature to “watch” points when the system is off. For example, parents with small children may want a tone to sound whenever a door or window is opened as a way of monitoring the location of the children.

Use this command to turn the watch feature on and off.

Once you have programmed the system with points to watch and the responses (refer to *Select Watch Tone (Cmd 62)* on page 24), you need to turn the watch function on and off.

1. Ensure the system is turned off (On indicator is off).
2. Press [CMD] [6] [1]. The keypad may prompt you to enter a valid passcode.
3. Enter your passcode if necessary. The keypad displays the current Watch status (On or Off).
4. Press [1] to turn Watch On or press [2] to turn Watch Off.
5. Press [CMD] to exit this feature.

Select Watch Tone (Cmd 62)

- I can perform this command.
- I cannot perform this command.

The Watch feature gives you the ability to watch points when the system is turned off. The system can be programmed to alert you to opened doors and windows. For example, parents with small children may want a tone to sound whenever a door is opened to monitor the children.

Use this command to set the type of response your system produces when a watch point is faulted. If you wish, you may tell your system to display the identity of the point and sound a short tone whenever certain doors or windows are opened. Refer to *Select Watch Points (Cmd 63)* to program which points in your system are to be watched.

1. Ensure the system is turned off (On indicator is off).
2. Press [CMD] [6] [2]. The keypad may prompt you to enter a valid passcode.
3. Enter your passcode if necessary. The keypad displays the current watch tone.
4. Select the type of watch tone (1 to 4) you want by pressing the appropriate number key.

Table 6: Watch Tone Selection

Watch Tone	Key	Description
Off	[1]	Displays point identity, but sounds no tone when points are faulted.
Short Beep	[2]	Displays point identity and sounds a short tone when point are faulted.
Beep Till Key	[3]	Displays point identity and sounds a tone until the [CMD] key is pressed.
Beep Till Closed	[4]	Displays point identity and sounds a tone until the point is returned to normal (door or window is closed). Pressing the [CMD] key also silences the tone.

If you just want to review (not change) the current watch tone setting, press [CMD] to exit this function.

5. After making your selection, the display confirms the choice you made.
6. Press [CMD] to exit this feature.

Select Watch Points (Cmd 63)

- I can perform this command.
- I cannot perform this command.

Once you decide how your system responds to watched points (refer to *Select Watch Tone (Cmd 62)*), you need to decide which of the points in your system are “watched”.

Use this command to tell your system which points to watch. You cannot watch 24-hour and 24-hour fire points.

Choosing which points to watch depends upon your security objective. If you have small children, you may choose to watch points of entry and exit. Each time a watch point is faulted (door or window is opened), the keypad responds as programmed.

1. Ensure the system is turned off (On indicator is off).
2. Press [CMD] [6] [3]. Enter your passcode if necessary. The keypad displays all points that are currently being watched (Watch On) and those that are not (Watch Off), followed by instructions for changing the current setting.
3. Press [0] [*] to turn Off all points. Press the appropriate number key (non-24-hour points) followed by [*] for individual points.

The display continues to scroll the remaining points. You may continue to program as many Watch Points as are available.

4. When you are finished, press [CMD] to return exit this command.

Extend Auto On Time (Cmd 51)

- I can perform this command.
- I cannot perform this command.

Your security company can program your system to turn on automatically. Use this command to delay the auto-on time by one hour during the auto-on pre-alert time.

1. Ensure the system is turned off (On indicator is off).
2. Press [CMD] [5] [1]. The keypad may prompt you to enter a valid passcode.
3. Enter your passcode if necessary. The keypad scrolls:

Auto-On Time
moved to:

hh:mm
mm/dd/yy

To exit,
Press Cmd.

4. Press [CMD] to exit.

Change Skeds (Cmd 52)

- I can perform this command.
- I cannot perform this command.

Use this command to change the time or date that the sked automatically turns the system All On, Part On, Part 2 On, off, or operates an output programmed by your security company. An output can be programmed by your security company to turn on lighting, a pool pump, etc.

1. Make sure the system is turned off (On indicator is off).
2. Press [CMD] [5] [2]. The keypad may prompt you to enter a valid passcode.
3. Enter your passcode if necessary. The keypad scrolls all available options.
4. Push the appropriate key for the option you want.
 - Push [1] to change All On Skeds.
 - Push [2] to change Part On Skeds.
 - Push [3] to change Part 2 On Skeds.
 - Push [4] to change Off Skeds.
 - Push [5] to change Output On Skeds.
 - Push [6] to change Output Off Skeds.

Sked All Days Feature



If your security company has programmed all days of the week for the sked you wish to change, you must press the [8] key to remove all days first (A), and then press the corresponding number key(s) to add or remove the desired days.

```
Sk1 A1 1 2 3 4 5 6 7 8
Days S M T W R F S A
```

The figure above shows an “A” below “8.” This indicates the Sked All Days feature is on, which means the sked is now active every day of the week. If you do not want to use this feature, press the [8] key once to clear the “A”, and then press the corresponding number key(s) to activate or deactivate the sked for the desired day(s).

For example, if you do not want your sked to operate on Mondays and Wednesdays, first press the [8] key to turn the All Days feature off. Then press the corresponding number keys to clear Monday and Wednesday from the sked.

All On Skeds

Refer to *Change Skeds (Cmd 52)* on page 25 for *Steps 1 to 4*.

5. The keypad scrolls all skeds that turn the system All On. Press the number key of the sked you want to change followed by [*].

```
Sk# A# All On
Time ##:##
```

```
Sk# A# 1 2 3 4 5 6 7 8
Days S M T W R F S A
```

6. Enter the time you want the system to automatically turn All On (HH:MM). In this example, program Sked 1 in Area 1 for 10:35 p.m.

```
Sk1 A1 Auto On
Time 22:35
```

7. The second line displays the days as programmed by your security company. Enter the days for the system to automatically turn All On (Sunday = 1, Saturday = 7, and all days = 8). In this example, suppose your security company programmed the sked for Monday, Tuesday, Wednesday, Thursday, and Friday.

```
Sk1 A1 1 2 3 4 5 6 7 8
Days - M T W R F - -
```

8. You want to add Saturday. To add Saturday, press [7].

```
Sk1 A1 1 2 3 4 5 6 7 8
Days - M T W R F S -
```

9. You now decide that you do not want this sked to activate on Monday. To remove Monday, press [2].

```
Sk1 A1 1 2 3 4 5 6 7 8
Days - - T W R F S -
```

10. Press [CMD] when you are done changing the sked.

Part On Skeds

Refer to *Change Skeds (Cmd 52)* on page 25 for *Steps 1 to 4*.

5. The keypad scrolls all skeds that turn the system Part On. Press the number key of the sked you want to change followed by [*].

```
Sk# A# Part On
Time ##:##
```

```
Sk# A# 1 2 3 4 5 6 7 8
Days S M T W R F S A
```

6. Enter the time for the system to automatically turn Part On (HH:MM). In this example, program Sked 2 in Area 1 for 5:00 p.m.

```
Sk2 A1 Part On
Time 17:00
```

- The second line displays the days as programmed by your security company. Enter the days for the system to automatically turn All On (Sunday = 1, Saturday = 7, and all days = 8). In this example, suppose your security company programmed the sked for Monday, Tuesday, Wednesday, Thursday, and Friday.

```
Sk2 A1 1 2 3 4 5 6 7 8
Days - M T W R F - -
```

- You want to add Saturday. To add Saturday, press [7].

```
Sk2 A1 1 2 3 4 5 6 7 8
Days - M T W R F S -
```

- You now decide that you do not want this sked to activate on Monday. To remove Monday, press [2].

```
Sk2 A1 1 2 3 4 5 6 7 8
Days - - T W R F S -
```

- Press [CMD] when you are done changing the sked.

Part 2 On Skeds

Refer to *Change Skeds (Cmd 52)* on page 25 for *Steps 1 to 4*.

- The keypad scrolls all skeds that turn the system Part 2 On. Press the number key of the sked you want to change followed by [*].

```
Sk# A# Part On
Time ##:##
```

```
Sk# A# 1 2 3 4 5 6 7 8
Days S M T W R F S A
```

- Enter the time for the system to automatically turn Part 2 On (HH:MM). In this example, program Sked 3 in Area 2 for 7:30 p.m.

```
Sk3 A2 Part On
Time 19:30
```

- The second line displays the days as programmed by your security company. Enter the days for the system to automatically turn All On (Sunday = 1, Saturday = 7, and all days = 8). In this example, suppose your security company programmed the sked for Monday, Tuesday, Wednesday, Thursday, and Friday.

```
Sk3 A2 1 2 3 4 5 6 7 8
Days - M T W R F - -
```

- You want to add Saturday. To add Saturday, press [7].

```
Sk3 A2 1 2 3 4 5 6 7 8
Days - M T W R F S -
```

- You now decide that you do not want this sked to activate on Monday. To remove Monday, press [2].

```
Sk3 A2 1 2 3 4 5 6 7 8
Days - - T W R F S -
```

Off Skeds

Refer to *Change Skeds (Cmd 52)* on page 25 for *Steps 1 to 4*.

- The keypad scrolls all skeds that turn the system off. Press the number key of the sked you want to change followed by [*].

```
Sk# A# Off
Time ##:##
```

```
Sk# A# 1 2 3 4 5 6 7 8
Days   S M T W R F S A
```

- Enter the time for the system to automatically turn off (HH:MM). In this example, program Sked 4 in Area 3 to turn off at 7:00 a.m.

```
Sk4 A3 Off
Time 07:00
```

- The second line displays the days as programmed by your security company. Enter the days for the system to automatically turn All On (Sunday = 1, Saturday = 7, and all days = 8). In this example, suppose your security company programmed the sked for Monday, Tuesday, Wednesday, Thursday, and Friday.

```
Sk4 A3 1 2 3 4 5 6 7 8
Days   - M T W R F - -
```

- You want to add Saturday. To add Saturday, press [7].

```
Sk4 A3 1 2 3 4 5 6 7 8
Days   - M T W R F S -
```

- You now decide that you do not want this sked to activate on Monday. To remove Monday, press [2].

```
Sk4 A3 1 2 3 4 5 6 7 8
Days   - - T W R F S -
```

- Press [CMD] when you are done changing the sked.

Output On Skeds



This section is intended for turning outputs on.

Refer to *Change Skeds (Cmd 52)* on page 25 for *Steps 1 to 4*.

- The keypad scrolls all skeds that turn the outputs on. Press the number key of the sked you want to change followed by [*].

```
Sk# Output ## On
Time ##:##
```

```
Sk# 1 2 3 4 5 6 7 8
Days S M T W R F S A
```

- Enter the time for the system to automatically operate Output 01 (HH:MM). In this example, Sked 5 is set for 12:00 a.m.

```
Sk5 Output 1 On
Time 12:00
```

- The second line displays the days as programmed by your security company. Enter the days for the system to automatically turn All On (Sunday = 1, Saturday = 7, and all days = 8). In this example, suppose your security company programmed the sked for Monday, Tuesday, Wednesday, Thursday, and Friday.

```
Sk5 1 2 3 4 5 6 7 8
Days - M T W R F - -
```

- You want to add Saturday. To add Saturday, press [7].

```
Sk5 1 2 3 4 5 6 7 8
Days - M T W R F S -
```

- You now decide that you do not want this sked to activate on Monday. To remove Monday, press [2].

```
Sk5 1 2 3 4 5 6 7 8
Days - - T W R F S -
```

- Press [CMD] if you are done changing the sked.

Output Off Skeds



This section is intended for turning outputs off.

Refer to *Change Skeds (Cmd 52)* on page 25 for *Steps 1 to 4*.

- The keypad scrolls all skeds that turn the outputs off. Press the number key of the sked you want to change followed by [*].

```
Sk# Output ## Off
Time ##:##
```

```
Sk# 1 2 3 4 5 6 7 8
Days S M T W R F S A
```

- Enter the time for the system to automatically operate Output 01 (HH:MM). In this example, Sked 5 is set for 1:00 a.m.

```
Sk6 Output 1 Off
Time 01:00
```

- The second line displays the days as programmed by your security company. Enter the days for the system to automatically turn All On (Sunday = 1, Saturday = 7, and all days = 8). In this example, suppose your security company programmed the sked for Monday, Tuesday, Wednesday, Thursday, and Friday.

```
Sk6 1 2 3 4 5 6 7 8
Days - M T W R F - -
```

- You want to add Saturday. To add Saturday, press [7].

```
Sk6 1 2 3 4 5 6 7 8
Days - M T W R F S -
```

- You now decide that you do not want this sked to activate on Monday. To remove Monday, press [2].

```
Sk6      1 2 3 4 5 6 7 8
Days    - - T W R F S -
```

- Press [CMD] when you are done changing the sked.

Change Outputs (Cmd 54)

- I can perform this command.
- I cannot perform this command.

Use this command to turn on and off the outputs programmed by your security company. These outputs can control outside lighting, pool pumps, watering systems, etc.

- Ensure the system is turned off (On indicator is off).
- Press [CMD] [5] [4]. The keypad may prompt you to enter a valid passcode.
- Enter your passcode if necessary. The keypad scrolls:

```
Turn all Outputs
Off? Press 0*
```

```
Output 1 is On
To turn Off
```

```
Press 1*
```

- Press [0] [*] if you want to turn all outputs off, or press the output number you want to turn off followed by [*]. For example, if you want to turn Output 1 off, you press [1] [*]. The keypad displays:

```
Output 1 is Off
To Turn On
```

- Press [CMD] to return the keypad to the normal display.

Remote Program (Cmd 43)

- I can perform this command.
- I cannot perform this command.

Use this command to connect to your security company's remote PC computer for programming alterations via the telephone line.



Only use this command when your security company instructs you to.

- Ensure the system is turned off (On indicator is off).
- Press [CMD] [4] [3]. The keypad may prompt you to enter a valid passcode.

- Enter your passcode if necessary. The keypad displays:

```
Remote Program
in progress.
```

If your system is busy and cannot call your security company's remote PC computer, the keypad displays:

```
System Busy.
Try again later.
```

- The keypad automatically returns to the normal display when programming is complete.

All Areas Off (Cmd 81)

- I can perform this command.
- I cannot perform this command.

Depending on the areas assigned to your authority level, this command turns off all areas at the same time when the system is split into more than one area.

- Press [CMD] [8] [1]. The keypad may prompt you to enter a valid code.
- Enter your passcode if necessary. The keypad indicates that all areas are off.

All Areas On (Cmd 80)

- I can perform this command.
- I cannot perform this command.

Depending on the areas assigned to your authority level, this command turns on all areas at the same time when the system is split into more than one area.

- Press [CMD] [8] [0]. The keypad may prompt you to enter a valid passcode.
- Enter your passcode if necessary. The keypad displays:

```
All Areas All On
Exit Now!
```

If an area has a faulted point(s) when you try to turn all areas All On, the keypad scrolls:

```
Area 2 not ready
Smiths Residence
```

```
Area 4 not ready
Smiths Residence
```

```
To force area on
hold All On key.
```

```
To stop,
press Cmd.
```

- If you hold down the All On key for 2 sec., it forces all areas to All On.

```
All Areas All On
Exit Now!
```

4. The keypad now displays all areas that have been forced on, one at a time.

```
A-2 Forced On
Smiths Residence
```

```
A-4 Forced On
Smiths Residence
```

Move to Area (Cmd 50)

- I can perform this command.
- I cannot perform this command.

Use this command to operate multiple areas from the same keypad when the system is split into more than one area. Before operating another area, move the keypad to the area that you want to operate.

1. Press [CMD] [5] [0]. The keypad may prompt you to enter a valid passcode.
2. Enter your passcode if necessary. The keypad scrolls through all available areas you can move to. In this example, you are at Area 1 keypad, which prompts you to press 2 to go to Area 2 or to press 3 to go to Area 3:

```
To go to Area 2
Smiths Residence
```

```
Press 2.
```

```
To go to Area 3
Smiths Residence
```

```
Press 3.
```

```
To exit
Press Cmd.
```

3. Press [CMD] to exit this feature.
4. To return your keypad to its “home” area, press and hold [CMD].

Auto-Forward On Setup (Cmd 83)

To utilize this command you must have “call forwarding” service from your local telephone company. Using that service, your security system allows you to program the auto-forward on sequence that forwards all incoming calls to the telephone number of your choice when you turn the system All On.

1. Press [CMD] [8] [3]. The keypad may prompt you to enter a valid passcode.
2. Enter your passcode if necessary. The keypad display scrolls:

```
Auto-Forward On
setup mode.
```

```
Enter digits for
Auto-Forward On
```

```
For 'pause' (P),
press All On.
```

```
For 'flash' (F)
press Part On.
```

```
A and C keys
move cursor.
```

```
To delete digit,
Press B key.
```

```
To view and edit
press Bypass.
```

```
To stop edit,
Press Bypass.
```

```
To exit,
Hold Cmd.
```

3. Enter the auto-forward off sequence to redirect all incoming calls.
4. Press and hold [Cmd] to exit this command. A typical dialing sequence might be:
 - two-digit telephone company feature code (72)
 - pause
 - phone number to forward to (315-555-1212)
 - flash (on-hook, pause, off-hook)
 - terminate (t)

For this sequence, the entry would look like:

```
7 2 p 3 1 5 5 5 5 1 2 1 2 f t
```

Auto-Forward Off Setup (Cmd 84)

- I can perform this command.
- I cannot perform this command.

Use this command to program the auto-forward off sequence that cancels the redirecting of all incoming calls to another telephone number when you turn the system off.

1. Press [CMD] [8] [4]. The keypad may prompt you to enter a valid passcode.
2. Enter your passcode if necessary. The keypad display scrolls:

```
Auto-Forward Off
setup mode.
```

```
Enter digits for
Auto-Forward Off
```

```
For 'pause' (P),
press All On.
```

```
For 'flash' (F)
press Part On.
```

```
A and C keys
move cursor.
```

```
To delete digit,
Press B key.
```

```
To view and edit
press Bypass.
```

```
To stop edit,
Press Bypass.
```

```
To exit,
Hold Cmd.
```

3. Enter the auto-forward off sequence to redirect all incoming calls.
4. Press and hold [CMD] to exit this command.

Auto-Forward On/Off (Cmd 82)

- I can perform this command.
- I cannot perform this command.

Use this command to turn the auto-forward feature on or off as necessary.

1. Press [CMD] [8] [2]. The keypad may prompt you to enter a valid passcode.
2. Enter your passcode if necessary. The keypad displays the current status and the available options.

Program the Auto-Forward feature by pressing [1] to turn Auto-Forward On, or [2] to turn Auto-Forward Off. For example, if Auto-Forward is On, press [2] to turn it Off.

3. To exit this function, press [CMD].

Remote Arming with Telephone, Area 1

- ❑ I can perform this command.
- ❑ I cannot perform this command.

This function controls the built-in telephone arming feature for Area 1. When enabled, the control panel answers the phone on the programmed ring count.

When the control panel answers the phone, it

- Sounds three beeps and starts the handshake tone for remote programming if the control panel is All or Part On.
- Sounds one short beep, waits approximately 3 sec., and then sounds one long beep if the control panel is Off. Press and hold the [5] key* for 2 sec. immediately after the first short arming beep and before the long beep begins.
- Arms if it detects a [5] key press from the telephone (All On with Delay, faulted points are force-armed). The control panel sounds three beeps (new armed state) and then hangs up.

* If arming from a cell phone, quickly press the [5] key three times. If pressing and holding the [5] key for 2 sec. from a house (land line) phone does not produce a tone long enough to arm Area 1, retry by quickly pressing the [5] key three times.



Remotely disarming the control panel cannot be done with a telephone.

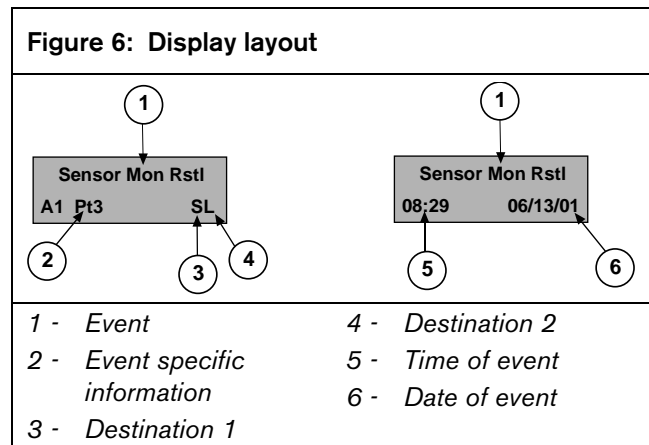
View Log (Cmd 85)

- ❑ I can perform this command.
- ❑ I cannot perform this command.

Use this command to display system events, such as alarm events, turning the system All On, Part On, and Part 2 On, and turning the system off. Events are displayed in reverse chronological order.

1. Press [CMD] [8] [5]. The keypad may prompt you to enter a valid passcode.
2. Enter your passcode if necessary. The keypad displays the event and user information and the date and time of the event.
3. Press [*] to view to the next event.
4. Press [CMD] to exit this function and return to the normal display.

Figure 6 shows a sample log event entry as displayed on the Text keypad:



The first line of the log shows the event description. The second line of the log display alternates between the time and date of the event and the area, point (device), user and communication information for the event. The keypad displays time in a 24-hour format and the date in a MM/DD/YY format.

The log displays the following characters to communicate certain information:

Table 7: Character Code Information

Display	Description
A#	Area number
Pt###	Point number
Dv###	Device number
Ln##	Phone line number
Mn#	Minutes until Auto Arm Sked
Cd##	User Code number
Op##	Output number
Ks##	Keyswitch number
U##	User number
##	Communication status for Routing Destinations 1 and 2
- (dash)	Destination disabled
A	Aborted
D	Deleted from pending buffer by control panel reset
F	Faulted
L	Local
P	Pending
S	Sent

Basic Pager Reports

A pager's display can show up to four fields of information in the following order:

Figure 7: Pager Display format

(Account Number) - (Event Number) - (Area Number) - (Point/User Number)

- **Account Number:** 4-digit account number. If the account number is greater than four digits, the first four digits are sent.
- **Event Number:** Panel event numbers. See Panel Event Descriptions on page 43 for information on control panel events.
- **Area Number:** Area number the faulted point is assigned to.
- **Point/User Number:** Point number assigned to the faulted point. This field can also show a User ID number.

Depending on its configuration, your pager can display any combination of the four fields shown in the order above with or without field separators. For example:

- Account Number: 1234
- Event Number: 08
- Area Number: 02
- Point Faulted: 21

A pager display configured to show all four fields with separators using the sample information from above would look like:

1234-08-02-21

A pager display configured to show all four fields without separators using the sample information from above would look like:

1234080221.

Contact your security company to modify pager display configuration.

- User IDs 1 to 32 are reserved for system user.
- User ID 252 is reserved for sked operation.
- User ID 253 is reserved for remote telephone communication.
- User ID 254 is reserved for remote programming communication.
- User ID 255 is reserved for keyswitch operation.

Control Panel Event Descriptions

The following table lists the events generated by the control panel. These events appear in the control panel log by name and in the pager display by event number.

Event #	Event	Description	Event #	Event	Description
01	AC Fail	AC power to control panel interrupted.	24	Rstrl Batt Low	Battery restoral from low battery.
02	AC Restore	AC power to control panel restored.	25	Rstrl Batt Missing	Battery restoral from missing battery.
03	Alarm, Tamper	Alarm from detection device tampered with.	26	Bypass, Fire, User	Selective bypass by user of fire detection device.
04	Alarm, Emergency	Alarm from emergency detection device or ABC key programmed for emergency response.	27	Bypass, Fire, RAM IV	Selective bypass of fire detection device by RAM IV.
05	Alarm, Panic	Alarm from panic/emergency detection device.	28	Bypass, Ctrl, User	Selective bypass by user of controlled detection device.
06	Alarm, Invisible	Alarm from detection device that does not appear at keypad during alarm or trouble conditions.	29	Bypass, Ctrl, RAM IV	Selective bypass by RAM IV of controlled detection device.
07	Alarm, 24-hr. Burg	Alarm from burglary detection device on 24 hours per day.	30	Bypass, 24-hr, User	Selective bypass by user of 24-hr. non-fire detection device.
08	Alarm, Cntrl, Dly	Alarm from detection device with entry/exit delays.	31	Bypass, 24-hr., RAM IV	Selective bypass by RAM IV of 24-hr. non-fire detection device.
09	Alarm, Cntrl	Alarm from detection device such as keyswitches, motion detectors (followers), or devices that initiate an alarm immediately (do not follow any entry/exit delays).	32	Bypass, Forced Pt	Detection device force-armed
10	Cross, Tamper	Tamper alarm from detection device with Cross Point option selected.	33	Bypass, Swinger	Point swinger bypassed.
11	Cross, Emergency	Emergency alarm from detection device with Cross Point option selected.	34	UnBypass, Fire, Usr	User cleared bypass (unbypass) of fire detection device.
12	Cross, Panic	Panic alarm from detection device with Cross Point option selected.	35	UnBypass, Ctrl, Usr	User cleared bypass (unbypass) of controlled detection device.
13	Cross, Invisible	Panic alarm from invisible detection device with Cross Point option selected.	36	UnBypass, 24-hr., Usr	User cleared bypass (unbypass) of 24-hr. detection device.
14	Cross, 24-hr. Burg	Burglary alarm from detection device with Cross Point option selected.	37	Call For Service	Report sent automatically at Call For Service interval. Does not indicate a trouble condition.
15	Cross, Cntrl, Dly	Alarm from entry/exit detection device with Cross Point option selected.	38	Cancel Alarm	User acknowledged active alarm before bell time expired for non-fire detection device.
16	Cross, Cntrl	Alarm from keyswitch, follower, or instant detection device with Cross Point option selected.	39	Cancel Fire	User acknowledged active alarm before bell time expired for fire detection device.
17	Cross, Unverified	Fault on one non-fire point type with Cross Point option selected. This is not an alarm event.	40	CheckSum Fail	Checksum on control panel parameters failed. Contact security company to verify control panel program.
18	Alarm Exit Error	Detection device faulted at end of exit delay.	41	CheckSum Fail, SDI	Checksum on SDI device parameters failed. Contact security company.

Table 8: Control Panel Event Descriptions (continued)

Event #	Event	Description	Event #	Event	Description
42	Cls, All, +Dly, Skd	System turned All On with entry/exit delay by sked.	63	Frc, Prt, +Dly, KS	System forced Part On with exit/entry delay by keyswitch.
43	Cls, All, +Dly, KS	System turned All On with entry/exit delay by keyswitch.	64	Frc, Prt, +Dly, RAM IV	System forced Part On with exit/entry delay by RAM IV.
44	Cls, All, +Dly, RAM IV	System turned All On with entry/exit delay by RAM IV.	65	Frc, Prt, +Dly, Usr	System forced Part On with exit/entry delay by user.
45	Cls, All, +Dly, Tel	System turned All On with entry/exit delay by telephone.	66	Frc, Prt, -Dly, RAM IV	System forced Part On with no delay (instant) by RAM IV.
46	Cls, All, -Dly, Usrl	System turned All On with no delay (instant) by user.	67	Frc, Prt, -Dly, Usr	System forced Part On with no delay (instant) by user.
47	Cls, All, -Dly, RAM IV	System turned All On with no delay (instant) by RAM IV.	70	Comm Fail, AltComm	Report failed to reach routing destination configured for Alternate Communication.
48	Cls, All, -Dly, Usr	System turned All On with no delay (instant) by user.	71	Comm, Restoral	After communication fail, report successfully sent to routing destination.
49	Cls, Prt, +Dly, Skd	System turned Part On with entry/exit delay by sked.	72	Comm Rstl, AltComm	After communication fail, report successfully sent to routing destination configured for Alternate Communication.
50	Cls, Prt, +Dly, KS	System turned Part On with entry/exit delay by keyswitch.	73	Date/Time Change	Date/Time in control panel changed.
51	Cls, Prt, +Dly, RAM IV	System turned Part On with entry/exit delay by RAM IV.	74	Duress	User entered Duress passcode or pressed Panic key sequence on RF Keyfob.
52	Cls, Prt, +Dly, Usr	System turned Part On with entry/exit delay by user.	75	Fire, Alarm	Alarm event on fire detection device.
53	Cls, Prt, -Dly, RAM IV	System turned Part On with no delay (instant) by RAM IV.	76	Fire, Cross	Verified alarm event on fire detection device with Cross Point option.
54	Cls, Prt, -Dly, Usr	System turned Part On with no delay (instant) by user.	77	Fire, Unverified	Unverified alarm event on fire detection device with Cross Point option.
55	Frc, All, +Dly, Skd	System forced All On with entry/exit delay by sked.	78	Fire, Missing	Fire detection device assigned to point expander (wired or RF) not responding to control panel status poll.
56	Frc, All, +Dly, KS	System forced All On with entry/exit delay by keyswitch.	79	Fire, Alarm, Rstl	Restoral from alarm, fire detection device.
57	Frc, All, +Dly, RAM IV	System forced All On with entry/exit delay by RAM IV.	80	Fire, Trouble	Trouble condition on fire detection device.
58	Frc, All, +Dly, Tel	System forced All On with entry/exit delay by telephone.	81	Fire, Trbl, Rstl	Restoral from trouble, fire detection device.
59	Frc, All, +Dly, Usr	System forced All On with entry/exit delay by user.	82	Instl Mode, Start	Installer passcode entered. Installer Mode accessed.
60	Frc, All, -Dly, RAM IV	System forced All On with no delay (instant) by RAM IV.	83	Instl Mode, End	Installer Mode exited.
61	Frc, All, -Dly, Usr	System forced All On with no delay (instant) by user.	84	Log Overflow	Panel log overflow condition. Oldest events being overwritten.
62	Frc, Prt, +Dly, Skd	System forced Part On with exit/entry delay by sked.	85	Log Threshold	Panel log reached threshold. Contact your security company.

Table 8: Control Panel Event Descriptions (continued)

Event #	Event	Description	Event #	Event	Description
86	AllCom Low Signl	Low signal strength detected on alternate communication device.	110	Output Set, Skd	Relay set by sked.
87	Missing, Alarm	Point assigned to point expander (wired or RF) not responding to control panel status poll while system is armed.	111	Output Set, RAM IV	Relay set by RAM IV.
88	Missing, Trouble	Point assigned to point expander (wired or RF) not responding to control panel status poll while system is armed.	112	Rstrl, Tamper	Restoral from alarm, Tamper point type.
89	Open, Skd	Opening by sked.	113	Rstrl, Emergency	Restoral from alarm, Emergency point type.
90	Open, RAM IV	Opening by RAM IV.	114	Rstrl, Panic	Restoral from alarm, Panic point type.
91	Open, Usr	Opening by user, by ID reported.	115	Rstrl, Invisible	Restoral from alarm, Invisible point type.
92	Open, KS	Opening by keyswitch.	116	Rstrl, 24-hr Burg	Restoral from alarm, 24-hour burglary point types.
93	Open, Skd, Alarm	Opening after alarm event by sked.	117	Rstrl, Cntrl, Dly	Restoral from alarm, controlled point types.
94	Open, RAM IV, Alarm	Opening after alarm event by RAM IV.	118	Rstrl, Cntrl	Restoral from alarm, controlled point types.
95	Open, Usr, Alarm	Opening after alarm event, ID reported.	119	Rcvr Jam	Jammed condition detected on premises RF receiver.
96	Open, KS, Alarm	Opening after alarm event by keyswitch.	120	Rcvr Jam Rstl	Jammed condition detected on premises RF received cleared.
97	Point Opening	Point opened by Independent Point Control device.	121	RF Battery Low	Low battery detected on premises RF transmitter.
98	Params Changed	Panel parameters changed.	122	RF Battery Rstl	Low battery condition detected on premises RF transmitter cleared.
99	Phone Line Fail	Phone the voltage less than 3 V for 40 sec.	123	RF Tamper Trbl	Premises RF Transmitter Tamper Trouble.
100	Phone Line Rstl	After Phone Line Fail event, phone line voltage detected at greater than 3 V for 40 sec.	124	RF Tamper Rstl	Premises RF Transmitter Tamper Restoral.
101	Bad Call to RAM IV	Panel attempted to call RAM IV but was unsuccessful.	125	SDI Missing	SDI device not responding to polling.
102	RAM IV Access Fail	RAM IV attempted to connect to control panel but was unsuccessful.	126	SDI Missing, Rstl	SDI device declared as missing now responding to polling.
103	RAM IV Access OK	RAM IV successfully connected and disconnected from control panel.	127	SDI Tamper	Tamper open on SDI Device Tamper.
104	Re-Boot, Panel	Normal start-up or reset with installer switch.	128	SDI Tamper, Rstl	SDI Device Tamper restored.
105	Re-Boot SDI	Unexpected reset (reboot) from SDI device.	129	SDI Trouble	Trouble detected on SDI device.
106	Output Reset, Usr	Relay reset by user.	130	SDI Trouble, Rstl	SDI (option bus) device trouble condition cleared.
107	Output Reset, Skd	Relay reset by sked.	131	SDI Over Current	Over current condition detected on SDI device.

Table 8: Control Panel Event Descriptions (continued)

Event #	Event	Description	Event #	Event	Description
108	Output Reset, RAM IV	Relay reset by RAM IV.	132	SDI OverCur, Rstl	Over current condition on SDI device restored.
109	Output Set, Usr	Relay set by user.	133	Sensor Mon Trbl	Sensor trouble detected.
134	Sensor Mon Rstl	Sensor trouble condition restored.	155	User Code Delete	User Code deleted.
135	Sensor Reset	User pressed Cmd 47.	156	User Code Tamper	Invalid User Codes entered at keypad exceeded User Tamper retry count.
136	System Inactive	System was not armed in inactive interval. Cmd 47 or arming system resets this trouble.	157	User Level Set	User Level set.
137	Test, OK	No system troubles at automatic test report time.	158	Walk Test Start	Walk Test started with Cmd 44.
138	Test, Off-normal	System trouble present at test time.	159	Walk Test End	Walk Test ended by user or timed out.
139	Trbl, Tamper	Trouble condition on Tamper or Voice Active detection device(s).	160	Siren Trouble	Trouble condition detected on Programmable Output 2 configured as supervised siren output.
140	Trbl, Emergency	Trouble condition on Emergency detection device(s).	161	Siren Restoral	Trouble condition on supervised siren output cleared.
141	Trbl, Panic	Trouble condition on Panic detection device(s).	162	Grnd Fault	Ground fault detected on control panel is sensor loops, SDI bus, or Aux power outputs.
142	Trbl, Invisible	Trouble condition on Invisible detection device(s).	163	Grnd Fault, Rstl	Ground fault condition cleared.
143	Trbl, 24-hr. Burg	Trouble condition on Burglary or Independent Point Control detection device(s).	164	First Open	Panel is configured for multiple area functions: first to open, last to close. Last area has closed.
144	Trbl, Cntrl, Dly	Trouble condition on Delay detection device(s).	165	Last Close	Panel is configured for multiple area functions: first to open, last to close. Last area has closed.
145	Trbl, Cntrl	Trouble condition on Keyswitch Follower and Instant detection device(s).	166	AltComm Cond	Trouble detected on alternate communication network.
146	Rstrl, Trbl, Tmpr	Restoral from trouble condition on Tamper or Voice Active detection device(s).	167	AltComm Fail	Network failure detected on alternate communication network.
147	Rstrl, Trbl, Emerg	Restoral from trouble condition on Emergency detection device(s).	168	AltComm Rstl	Network communications resumed on alternate communications network.
148	Rstrl, Trbl, Panic	Restoral from trouble condition on Panic detection device(s).	169	Reserved	
149	Rstrl, Trbl, Invis	Restoral from trouble condition on Invisible detection device(s).	170	Reserved	
150	Rstrl, Trbl, 24-hr.	Restoral from trouble condition on Burglary Independent Point Control detection device(s).	171	Reserved	
151	Rstrl, Trbl, Dly	Restoral from trouble condition on Delay detection device(s).	172	Reserved	
152	Rstrl, Trbl, Cntrl	Restoral from trouble condition on Keyswitch, Follower, and Instant detection device(s).	173	Rstrl, Swinger	Restoral from Swinger Bypass.

Table 8: Control Panel Event Descriptions (continued)

Event #	Event	Description	Event #	Event	Description
153	User Code Area Set	User Code "added" by assigning area.	173	Rstrl, Swinger	Restoral from Swinger Bypass.
154	User Code Change	User Code changed.	174	Rstrl, Fire, Miss	Restoral from Fire Missing. Local event, no report.
175	Rstrl, Alarm, Miss	Restoral from Missing. Local event, no report.	180	UnBypass, 24-hr., RAM IV	Bypass on 24-hr detection device(s) cleared using RAM IV (unbypass).
176	Rstrl, Trble, Miss	Local event. No report.	181	RF Battery Low	Low battery condition on RF keyfob.
177	Rstl, Low Signl	Restoral from alternate communication low signal strength event.	182	RF Battery Rstl	Low battery condition on RF keyfob cleared.
178	UnBypass, Fire, RAM IV	Bypass on Fire detection device(s) cleared using RAM IV (unbypass).	183	Default PINS	Installer or User PINs are not changed from default. Local event only.
179	UnBypass, Ctrl, RAM IV	Bypass on Controlled detection devices(s) cleared using RAM IV (unbypass).	184	Default PINS Rstl	Installer or User default PINs are changed. Local event only.

Security System Limitations

Not even the most advanced security system can guarantee protection against burglary, fire, or environmental threats. All security systems are subject to possible compromise or failure-to-warn for a variety of reasons including, but not limited to:

- If sirens or horns are placed outside the hearing range of people in remote areas of the building or in areas that are frequently closed off, they do not provide the intended protection.
- If intruders gain access through unprotected points of entry, the system does not detect their entrance.
- If intruders have the technical means of bypassing, jamming, or disconnecting all or part of the system, they are not be detected.
- If the AC power supply is OFF and the back up battery is either missing or dead, sensors do not detect intrusion.
- Smoke detectors cannot detect smoke in chimneys, walls, or roofs, or smoke blocked by a closed door. They may not detect smoke or fire on a level of the building different from the one on which they are located. Smoke detectors may not be able to warn in time about fires started by explosions, improper storage of flammables, overloaded electrical circuits, or other types of hazardous conditions.
- If phone lines are out of service, reports from the security system to the security company cannot be sent. Telephone lines are vulnerable to compromise by several means.

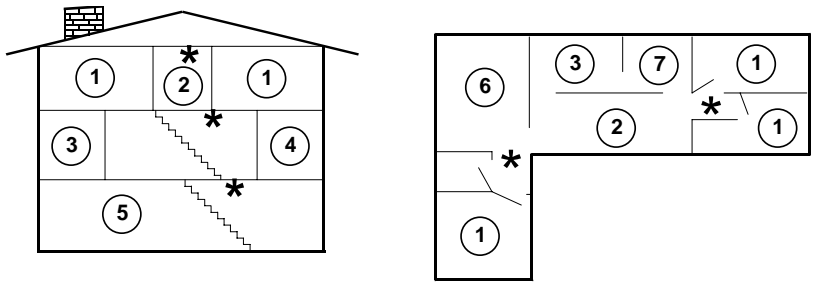
Inadequate maintenance and failure to test are the most common causes of alarm failure. It is strongly recommended that you test your system once a week to be sure that all system components are working properly. Although having a security system may make you eligible for reduced insurance premiums, the system is no substitute for insurance. Warning devices cannot compensate you for loss of life or property.

Fire Safety and Evacuation

Residential fire is a leading cause of accidental death. Most fire related deaths occur at night when occupants suffocate in their sleep from smoke and toxic gases, rather than from burns. To help reduce this risk, the following program should be implemented.

1. Minimize fire hazards. Smoking in bed, cleaning with flammable liquids such as gasoline, leaving children home alone, and using unsafe holiday decorations are some of the common causes of household fire.
2. Install a fire alarm system. The primary purpose of this system is to protect lives by giving the earliest possible warning of danger.
3. A smoke detector should be provided to protect each sleeping area in a home.
4. Practice an escape plan. Because there may be very little time between detection of a fire and the time it becomes deadly, it is important that every family member understands how to quickly evacuate according to the plan.
5. Plan both primary and alternate escape routes. Since stairwells and hallways may be blocked during a fire, exiting through a bedroom window must be a part of the escape plan. If the sleeping area is above the ground floor, install a means of safely descending outside the building if one does not already exist.
6. As a part of this plan, all family members should arrange to meet at a location away from the house (such as a neighbor's house) so you will know that everyone is accounted for.
7. If it is determined that the alarm was accidentally sounded, the bell should be silenced, the detectors reset, and your security company notified immediately that there is no emergency situation.

Figure 8: Smoke Detector locations



- | | |
|-----------------|---------------------|
| 1 - Bedroom | 5 - Basement |
| 2 - Hall | 6 - Recreation room |
| 3 - Living room | 7 - Kitchen |
| 4 - Dining room | * - Smoke detector |



A smoke detector should be located on each story including basements, but excluding crawl spaces and unfinished attics. Locate smoke detectors between sleeping areas and family living areas.

Maintenance and Service

This security system requires very little maintenance; however, you should test the system weekly to ensure it is working properly. A test schedule and maintenance program can be arranged. If you notice a change in operation during normal use or testing, call for service as soon as possible. Do not attempt to repair the control panel, keypads, or detectors yourself.

Refer to *Figure 1* on page 2 for security company, contact, and installation information.

Power Failure

If the keypad indicates a power failure and you have power in the rest of your premises, there may be a problem with the electrical transformer or circuit breaker supplying power to your security control panel. First, check to be sure that the transformer is securely plugged into the electrical outlet. If it appears to be damaged in any way, do not attempt to repair it. Call your security company for service.

Refer to *Figure 1* on page 2 for transformer information.

If the transformer is plugged in, check the circuit breaker supplying power to the outlet. If the breaker is tripped, check the appliances on the circuit for signs of electrical problems. Make sure someone has not intentionally turned the breaker off. When all is clear, reset the breaker.

Refer to *Figure 1* on page 2 for the circuit breaker number.

How to clean the keypad

If your keypad gets dirty, apply a household glass cleaner to a clean cloth or paper towel and wipe the surface. Do not spray any liquid directly onto the keypad. It could run inside the case and damage electrical circuits.

Glossary

24-Hour Point: Points that are always on even when the system is turned off. There are two types of 24-hour Points: Fire Points and Non-Fire Points.

All On: All controlled points are armed. All On with No Delay (Instant) is an option. No Exit or Entry Delay is provided with the No Delay option.

Burglary Alarm Tone: Constant warble tone.

Central Station: Facility where trained personnel monitor a security system 24 hours a day. The security system may be programmed to contact the central station during alarm conditions, enabling central station personnel to dispatch the proper authorities.

Controlled Point: Point that responds to alarm conditions depending upon whether the system is turned on or off.

Entry Delay: Programmed delay of the system alarm responses that allows a person to enter the building through the entry door to turn the system off. An alarm response begins if the area is not disarmed before Entry Delay expires.

Error Tone: Same warble tone as Trouble Tone, but not repeated.

Exit Delay: Programmed delay of the system alarm responses that allow a person to exit the area before the system turns on. An alarm response begins if a point is faulted after Exit Delay expires.

Faulted Point: Point that is not normal, such as an open door or window.

Fire Alarm Tone: Warble tone that is on for 1 sec. and then briefly off (repeatedly).

Force Arming: Method of overriding the safety feature that prevents arming with a faulted circuit on a control panel.

Instant Alarm: Point type that initiates an alarm immediately when faulted. This point type does not follow any Entry/Exit Delay time.

No Delay: Turning the system on without Entry or Exit Delay.

Non-Fire Point: Type of 24-hour point that is always on and cannot be turned off.

Off: Controlled points that are not armed (system is off).

Off Display: Display that appears when the system is turned off and no keys are pressed (normal display).

On: System is turned on (armed). Controlled points are armed and begin an alarm response if faulted.

Part On: Installer-defined subset of the controlled points. Part On with No Delay (Instant) is an option. No Exit or Entry Delay is provided with the No Delay option.

Part 2 On: User-defined subset of the controlled points. Part 2 On with No Delay (Instant) is an option. No Exit or Entry Delay is provided with No Delay option.

Point: Detection device or group of devices connected to your security system.

RAM IV: Remote Account Manager IV; a Windows® – based account management and control panel programming utility designed to remotely set up and program specific control panels.

Restoral Report: Signal transmitted upon the removal of a trouble or alarm condition from an alarm circuit.

SDI: Serial Device Interface.

Sked: Scheduling parameter that allows a selected event to happen at a specific time.

Trouble: Service condition that needs to be corrected, such as a broken wire.

Trouble Tone: Repeating warble tone that is on briefly, followed by a pause, and then followed by the warble tone.

Warble Tone: Tone that is on for 1 sec., then briefly off.

Index

	2	
24-Hour Point.....	6	
Fire.....	6	
Non Fire.....	6	
	A	
Add a Passcode.....	18	
Alarm Memory		
View.....	21	
Alarms		
Burglary.....	8	
Fire.....	8	
Reporting.....	8	
Silence.....	9	
All Areas Off.....	28	
All Areas On.....	28	
All Day Skeds.....	25	
All On Skeds.....	25	
Area		
Move to.....	29	
Areas		
All Off.....	28	
All On.....	28	
Arming		
Area 1		
Remotely with telephone.....	31	
Authority Levels		
Others' Passcode		
Change.....	17	
Auto On Time		
Extend.....	24	
Auto-Forward		
Off Setup.....	30	
On Setup.....	29	
On/Off.....	30	
	B	
Basic Pager Reports.....	32	
Burglary Alarm.....	8	
Keypad Tone.....	7	
Bypass Points.....	15	
	C	
Change		
Others' Passcode.....	17	
Authority Levels.....	17	
Outputs.....	28	
Passcode.....	16	
Skeds.....	25	
Check		
System Status.....	9	
		System Trouble.....20
Command		
1 - Turn System All On.....	10	
2 - Turn System Part On.....	11	
3 - Turn System Part 2 On.....	12	
4 - Check System Troubles.....	20	
40 - View Alarm Memory.....	21	
41 - System Test.....	22	
42 - View System Trouble.....	21	
43 - Remote Program.....	28	
44 - Walk Test.....	23	
45 - Date and Time.....	16	
47 - Reset System.....	23	
48 - View Point Trouble.....	22	
49 - Keypad Adjust.....	10	
50 - Move to Area.....	29	
51 - Extend Auto On Time.....	24	
52 - Change Skeds.....	25	
53 - Renew One-time Passcode.....	20	
54 - Change Outputs.....	28	
55 - Change Passcode.....	16	
56 - (Select 1) Change Others' Passcodes.....	17	
56 - (Select 2) Change Others' Passcode Authority		
Levels.....	17	
56 - (Select 3) Add a Passcode.....	18	
58 - Delete Passcode.....	19	
61 - Turn Watch On/Off.....	23	
62 - Select Watch Tone.....	24	
63 - Select Watch Points.....	24	
65 - Set Part 2 Points.....	12	
80 - All Areas On.....	28	
81 - All Areas Off.....	28	
82 - Auto-Forward On/Off.....	30	
83 - Auto-Forward On Setup.....	29	
84 - Auto-Forward Off Setup.....	30	
85 - View Log.....	31	
Commands.....	8	
Control Panel		
Event Descriptions.....	33	
Controlled Point.....	6	
	D	
Date.....	16	
Delay Silent.....	13	
Delete Passcode.....	19	
Descriptions		
Control Panel Events.....	33	
	E	
Entry Delay		
Keypad Tone.....	7	
Error		
Keypad Tone.....	7	
Evacuation.....	38	

Event Descriptions
 Control Panel..... 33
 Exit Delay
 Keypad Tone 7

F

Failure
 Power 40
 Faulted Point 6
 View 15
 Fire Alarm
 Keypad Tone 7
 Fire Alarms 8
 Fire Point 6
 Fire Safety and Evacuation 38
 Fire Trouble Events 8
 Force Arm 14

H

How to clean the keypad 40

I

information
 security system
 circuit breaker number 2
 telephone
 jack location 2
 number 2
 call to test 2
 transformer location 2

K

Key Press
 Keypad Tone 7
 Keypad
 Adjust (Cmd 49) 10
 Cleaning
 How to 40
 Commands 8
 LED Descriptions 8
 Tones 7
 Burglary Alarm 7
 Entry Delay 7
 Error 7
 Exit Delay 7
 Fire Alarm 7
 Key Press 7
 OK 7
 Trouble 7
 Watch 7
 Keys 7

L

LED
 Descriptions
 Keypad 8

Limitations
 Security System 38
 Log
 View 31
 Log Out of the System 9

M

Maintenance 40
 Move to Area 29

N

No Delay
 Turn System On with 12
 Non Fire
 24-Hour Point 6
 Trouble Events 8

O

Off Skeds 27
 OK
 Keypad Tone 7
 Output
 Off Skeds 27
 On Skeds 27
 Outputs
 Change 28

P

Pager Reports
 Basic 32
 Part 2
 On Skeds 26
 Points
 Set 12
 Turn System On 12
 Part On
 Skeds 25
 Passcode
 Add 18
 Change 16
 Change Other's 17
 Authority Levels 17
 Delete 19
 Renew One-Time 20
 Point
 24-Hour 6
 Fire 6
 Non-Fire 6
 Controlled 6
 Faulted 6
 View 15
 Part 2
 Set 12
 View Trouble 22
 Points
 Bypass 15
 Power

Failure 40
 Program
 Remote 28

R

Remote Arming
 Area 1
 with telephone 31
 Remote Program 28
 Renew One-Time Passcode 20
 Reporting
 Alarm 8
 Reset the System 23

S

Safety
 Fire 38
 Security System Limitations 38
 Select
 Watch
 Points 24
 Tone 24
 Service 40
 Set Part 2 Points 12
 Silence Alarms 9
 Skeds
 All Day 25
 All On 25
 Change 25
 Off 27
 Output
 Off 27
 On 27
 Part 2
 On 26
 Part On 25
 Status
 Check System 9
 System
 Limitations 38
 Log out of 9
 Reset 23
 Test 22
 Trouble
 Check 20
 View 21
 System Status
 Check 9

T

Time 16
 Tones
 Keypad 7
 Burglary Alarm 7
 Entry Delay 7
 Error 7
 Exit Delay 7
 Fire Alarm 7
 Key Press 7
 OK 7
 Trouble 7
 Watch 7
 Trouble
 Keypad Tone 7
 Trouble Events
 Fire 8
 Non Fire 8
 Turn System Off 10
 Turn System On
 All 10
 No Delay 12
 No Exit Tone 13
 Part 11
 Part 2 12
 Points Faulted 14
 Turn Watch On/Off 23

V

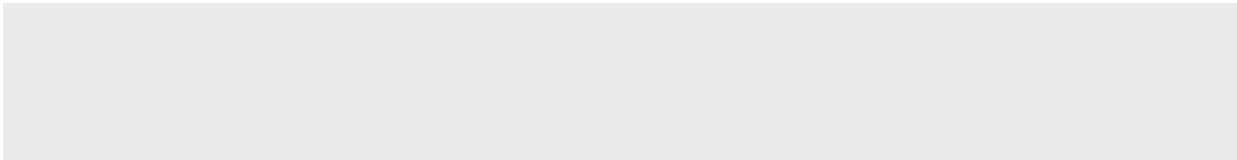
View
 Alarm Memory 21
 Faulted Points 15
 Log 31
 Trouble
 Point 22
 System 21

W

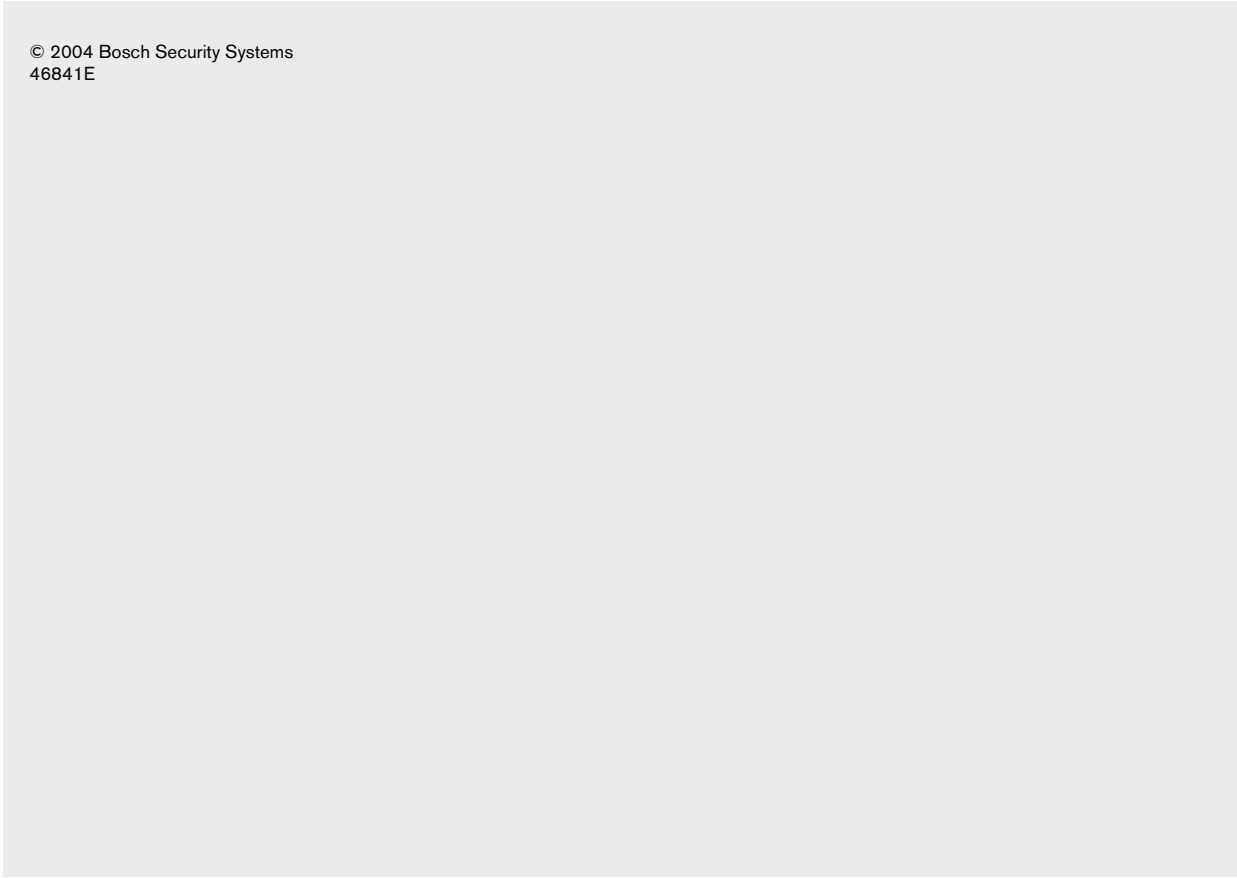
Walk Test 23
 Watch
 Keypad Tone 7
 Points
 Select 24
 Tone
 Select 24
 Turn On/Off 23

Notes

Notes



Bosch Security Systems
130 Perinton Parkway
Fairport, NY 14450-9199
Customer Service: (800) 289-0096
Technical Support: (888) 886-6189



© 2004 Bosch Security Systems
46841E

BOSCH